

DAY TWO
9:50AM - 10:30AM

GLOBAL PERSPECTIVES ON WATER DATA

INTELLIGENT QUESTION: HOW ARE NEW MODELS OF DATA INNOVATION BEING USED AROUND THE WORLD TO DRIVE SUSTAINABILITY IN WATER AND BEYOND?



Deepa Karthykeyan
Co-Founder/Partner, Athena Infonomics



Janet McClaren
Policy Manager, Global Partnership for Sustainable Development Data



Abhi Nemani
Managing Director, EthosLabs



Michael Rosenberg Pedersen
Head of Department of Drinking Water, Aarhus Van

8TH ANNUAL CA WATER DATA SUMMIT
INTELLIGENT QUESTIONING (IQ)
SHARING WATER WISDOM
SEPTEMBER 7&8, 2023



STANFORD UNIVERSITY | PALO ALTO, CA
CaWaterDataSummit.org

[#CAWaterDataSummit](https://twitter.com/CAWaterDataSummit) [#IntelligentQuestioning](https://twitter.com/IntelligentQuestioning)



Data informed problem solving to
strengthen water and sanitation services
in emerging and frontier markets

What can we learn from the CaDC model?

Cities and utilities in emerging markets operate in an opaque market system with limited information on customers, costs, prices and service levels



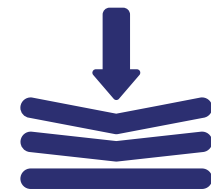
This makes them less investible



Exacerbates inequities

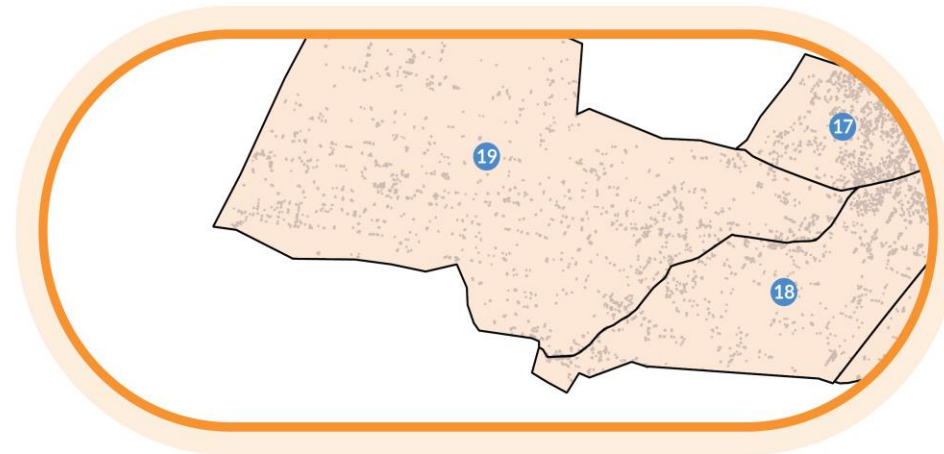
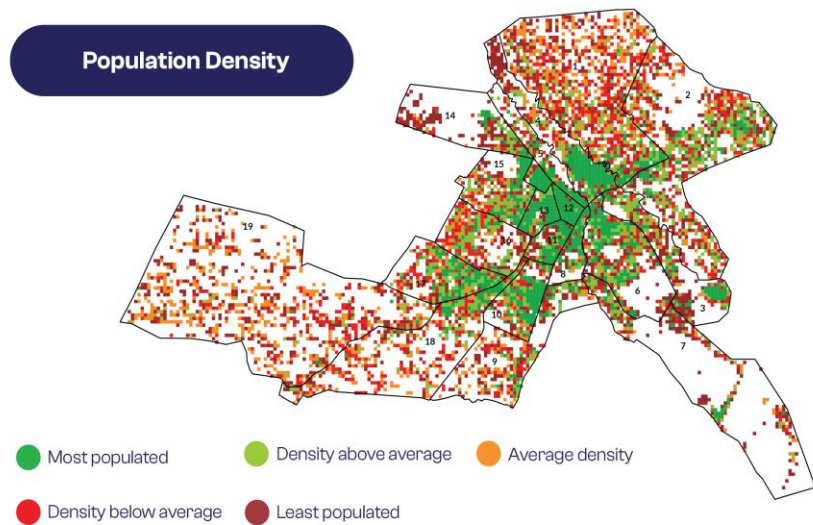
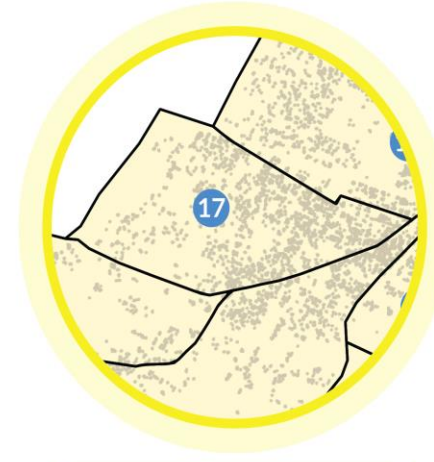
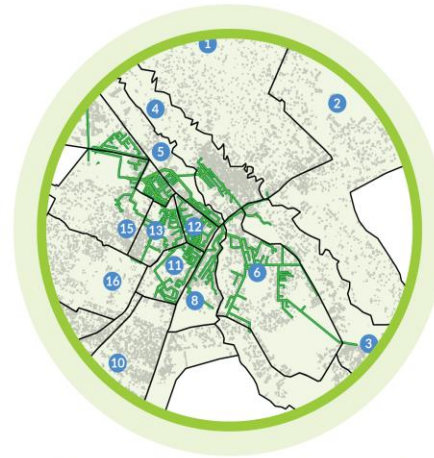
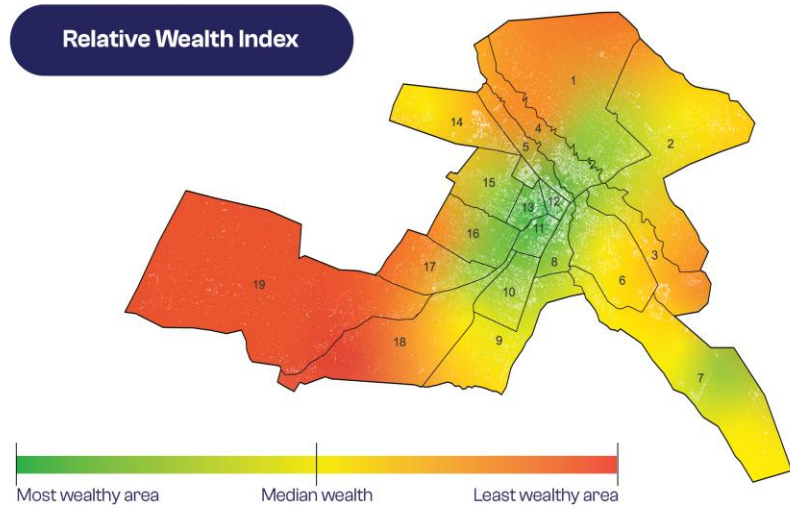


Negatively impacts value for money from public finance



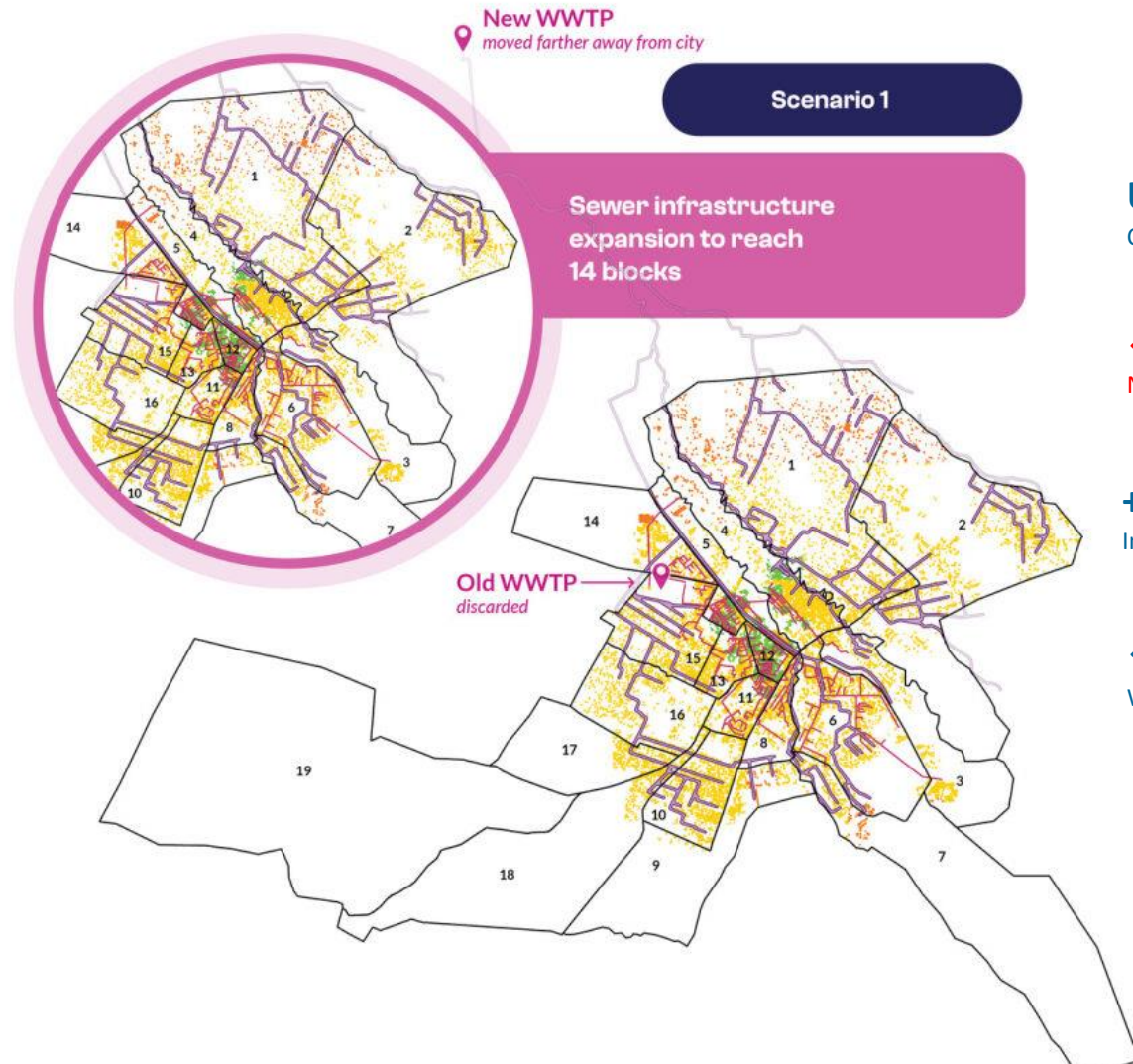
Lowers resilience

Let me illustrate this with an example..



- Nanyuki in Kenya has 0.135 Mn population.
- 15% are poor
- 39% have access to with sewers. Rest of the areas are serviced by private operators
- The town has a water deficit of 1,080 m³/d

Scenario 1- Investment decisions guided with limited analytical support to the utility



US\$ 22 Mn
Capital Outlay

↓ US\$ 0.7Mn
Net Revenue/year

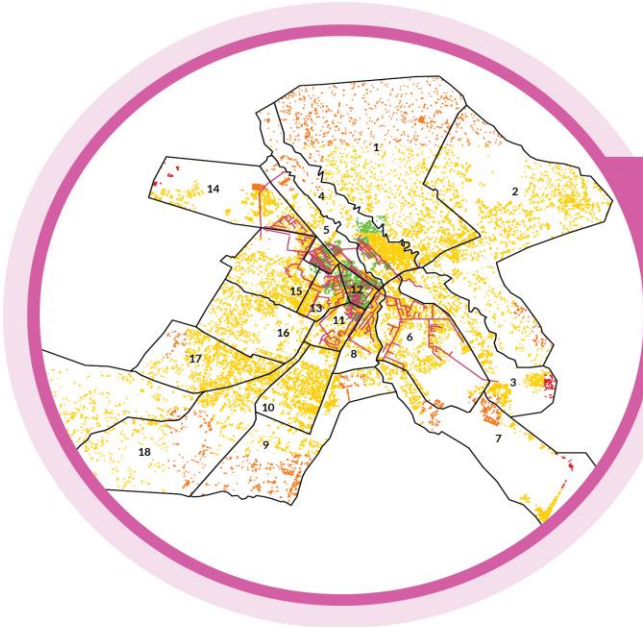
+33% LIH Access
Improvement

↑23%
Water Consumption

The proposed project is **not nearly as financially viable**

Poor in the blocks left out **have to pay for a sewer project** that not only do not benefit them, but **may worsen their situation** due to shift in treatment infra site

Scenario 2 – Insights on the equity-viability- resource use trade offs can improve quality of decisions



Scenario 2

Interventions to organize & deliver the onsite services + minor repairs of existing sewers

US\$ 4 Mn
Capital Outlay

↑ US\$ 0.4Mn
Net Revenue/year

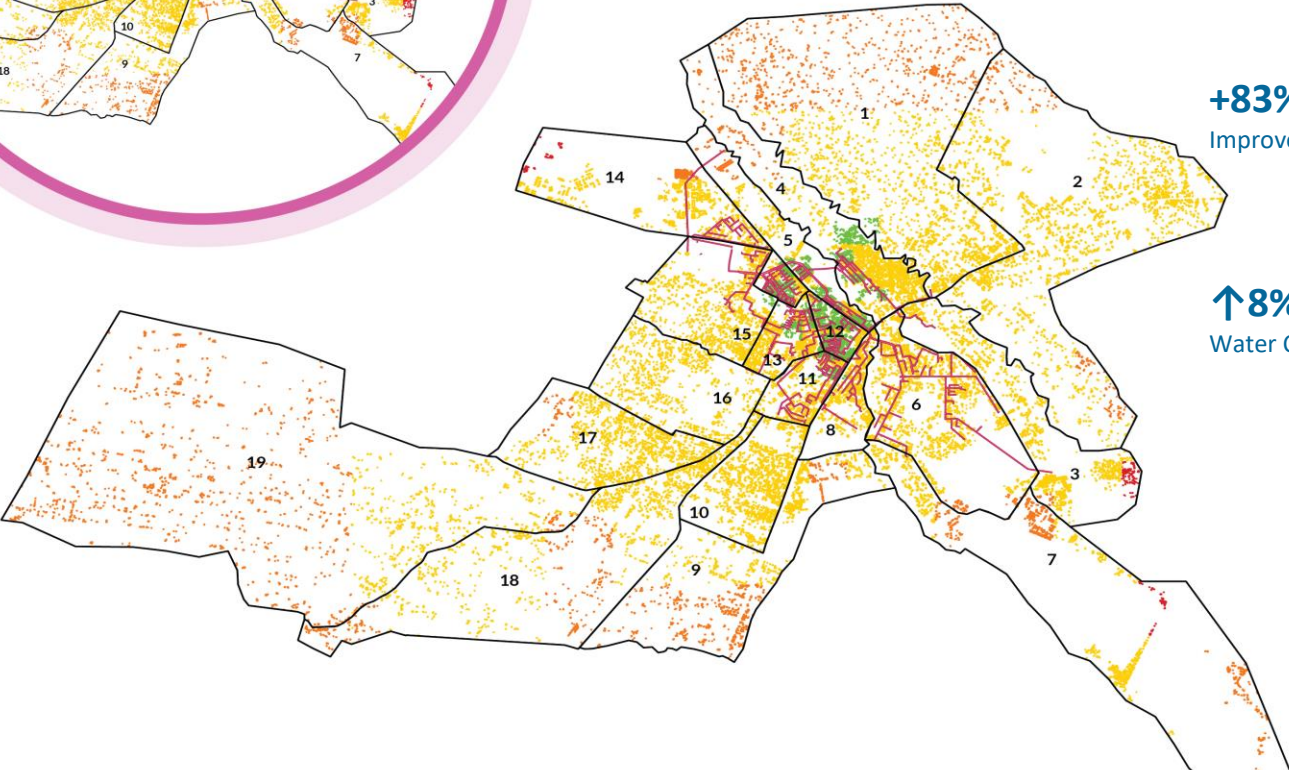
+83% LIH Access
Improvement

↑8%
Water Consumption

Sustainability:
Improved Value for Money
and financial sustainable

Equity & Safety:
Increased safe access to
poor

**Environmental
Sustainability:**
Reduced stress on water
requirement



CaDC as a template for a 'scale driven' approach to address technology, data talent and system gaps in cities & utilities

Investing in Technology and Tools –

Digital public goods (for ex: DIGIT, EquiServe)

Investing in People –

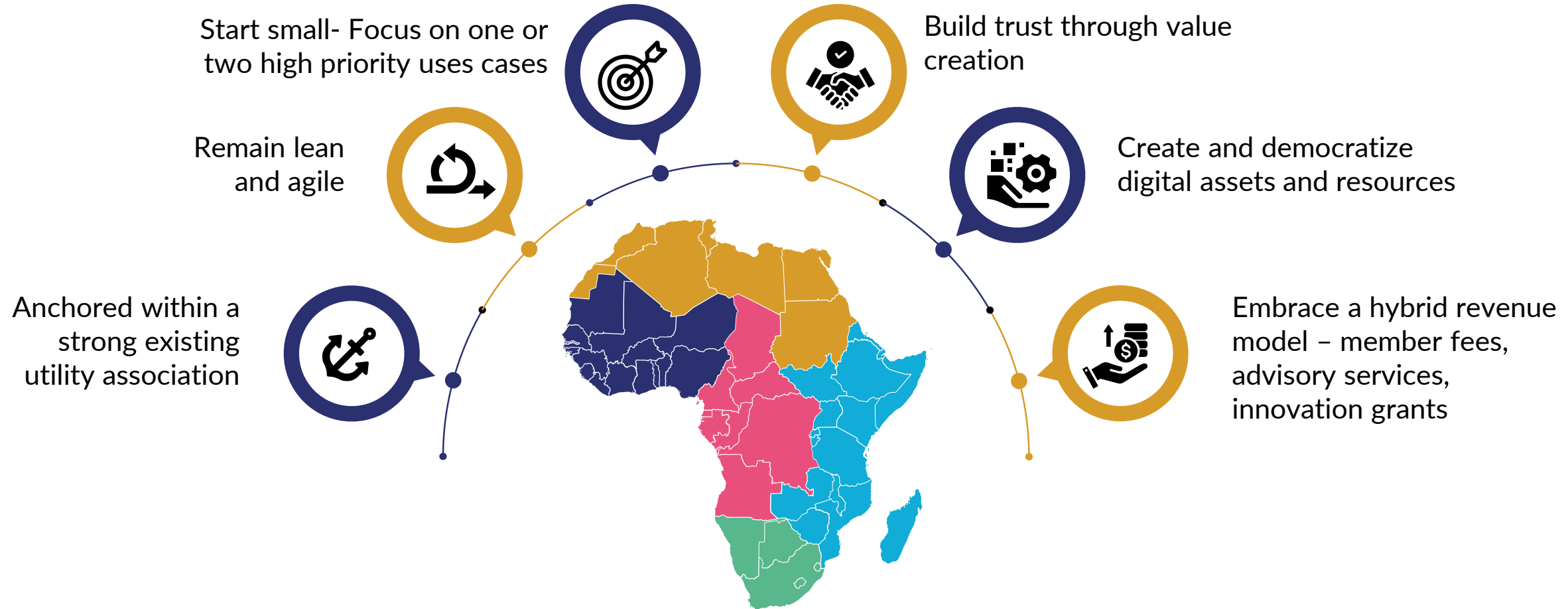
Attract and train talent (for ex: a data science fellows' program)

Investing in Process and Systems –

Norms and data standards



Vision for an Africa Utility Data Collaborative



ATHENA
INFONOMICS

Thank you

www.athenainfonomics.com





How the CaDC was recognized as a leader among world-wide financially sustainable data collaboratives



**Global
Partnership**
for Sustainable
Development Data

About the Global Partnership for Sustainable Development Data

700

Partners

30+

Government partners

120

Data partnerships

35

Work across 35 countries

200+

Convenings delivered

Understanding basic cooking

The Data Sharing Food Pyramid



Effective and Ethical Data Sharing at Scale

A cookbook for data producers,
donors, policymakers and other
development practitioners



With support from
Google.org



Thank you

For questions, contact: jmclaren@unfoundation.org

Visit data4sdgs.org for more information.

#Data4SDGs